

RETAIL SPACE FOR LEASE

2324
SPARROWS POINT RD
BALTIMORE, MD 21219



PROUD PARTNER
XTEAM
RETAIL ADVISORS

CONTACT:

OLIVER WEINBERG

o 443.610.9618

E oliver@mfirealty.com

MICHAEL STOLTZ

o 410.952.7869

E mstoltz@mfirealty.com



PROPERTY HIGHLIGHTS

- 2,400 SF, free-standing building for lease
- 13 parking spaces on site
- Zoning: BL
- More than 105' of frontage on Sparrows Point Road
- Surrounded by >1 million square feet of warehouse & distribution facilities

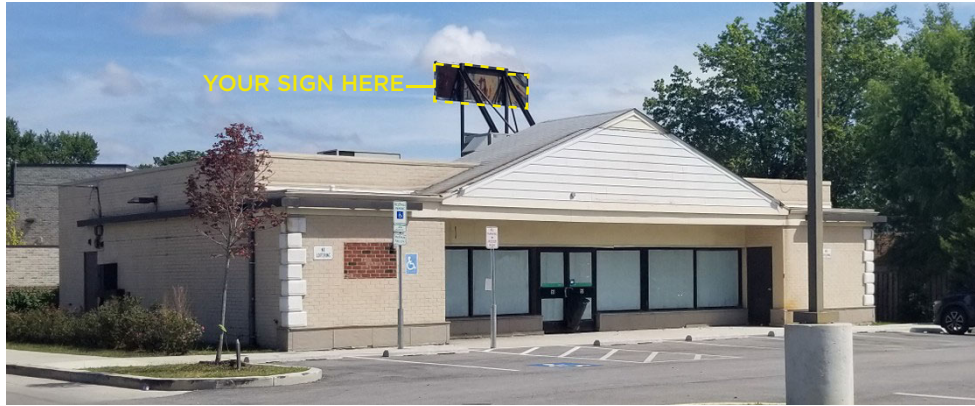
DEMOGRAPHICS	1 MILE	3 MILE	5 MILE
POPULATION:	6,115	29,272	85,807
AVERAGE HH INC:	\$147,660	\$116,278	\$99,442
TOTAL HOUSEHOLDS:	2,483	10,884	33,240

JOIN AREA RETAILERS:

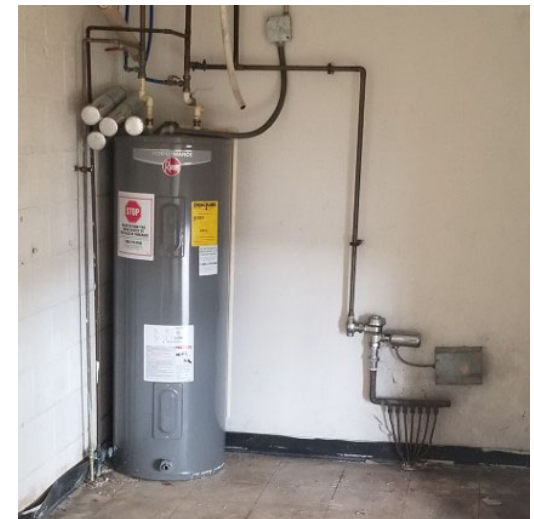


EXTERIOR PHOTOS

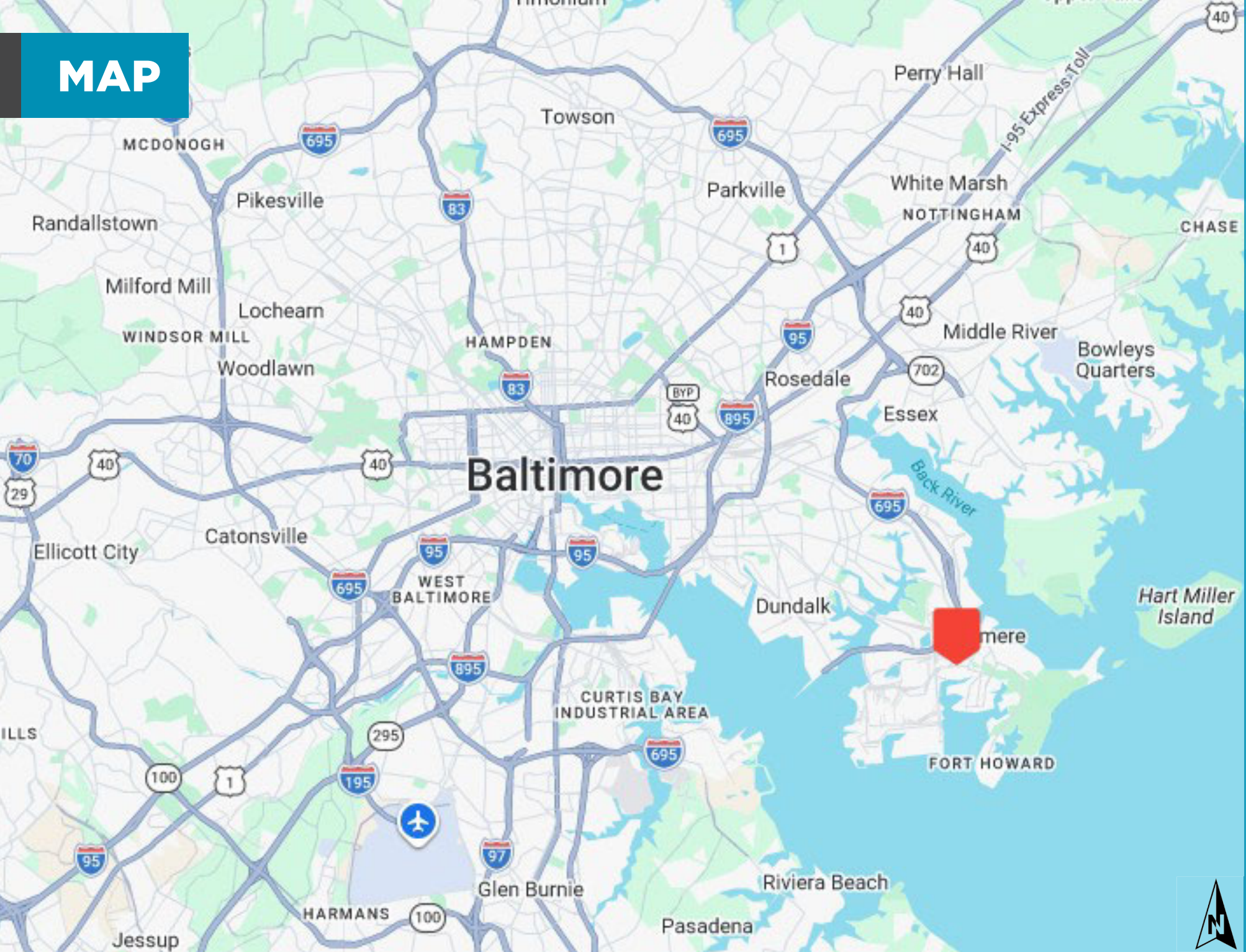
PHOTOS



INTERIOR PHOTOS



MAP



AERIAL

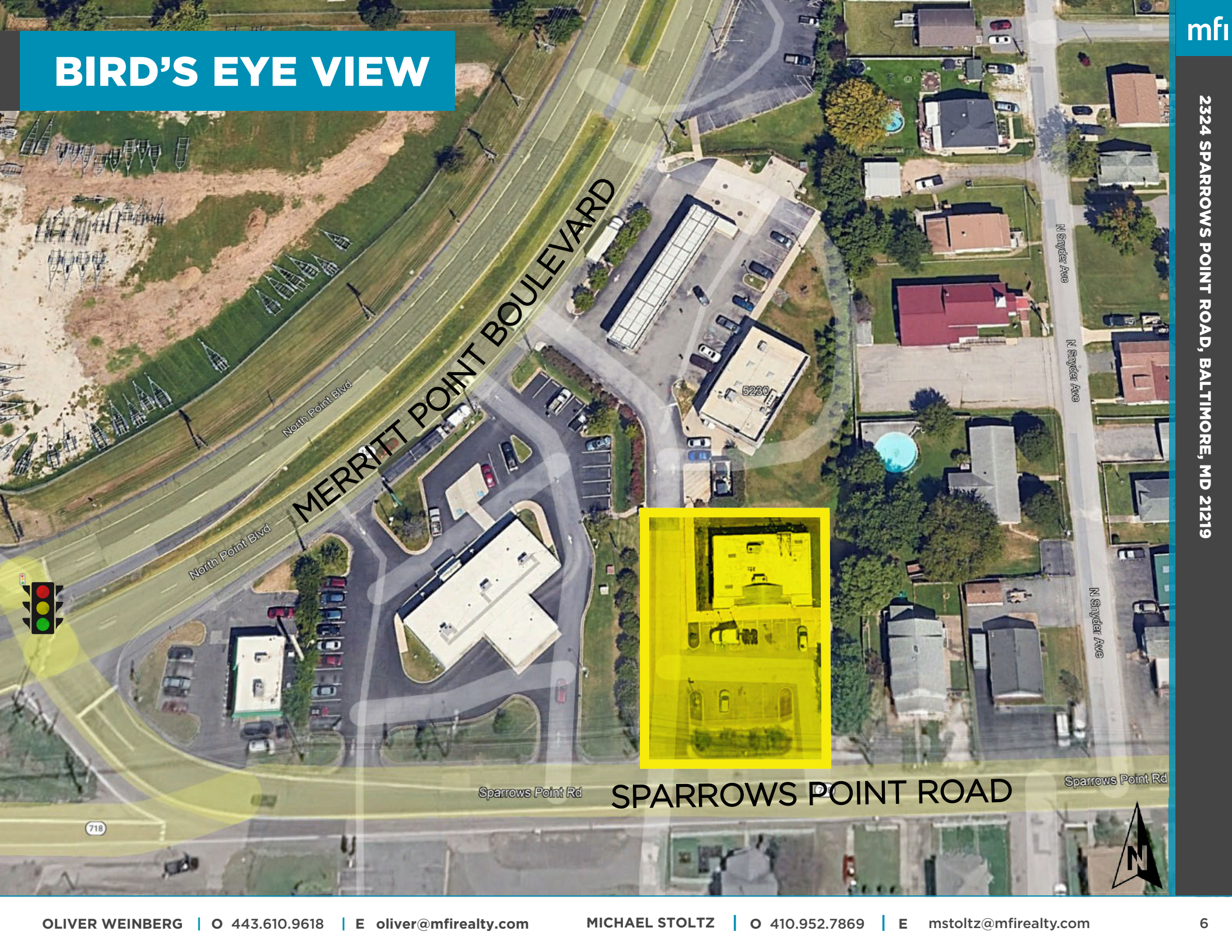


2324 SPARROWS POINT RD

2324 SPARROWS POINT ROAD, BALTIMORE, MD 21219



BIRD'S EYE VIEW



718

MERRITT POINT BOULEVARD

SPARROWS POINT ROAD

