

TOWSON COMMONS

mfirealty

1 West Pennsylvania Ave
Towson, Maryland 21204

Michael Stoltz
mstoltz@mfirealty.com
410.308.0700

mfirealty.com

PROUD PARTNER
XTEAM
RETAIL ADVISORS



TOWSON COMMONS

1 West Pennsylvania Ave, Towson, Maryland 21204



Mixed-use development
in the retail corridor
of Towson





115,000 SF of retail space

anchored by a
54,000 SF LA Fitness

3 liquor licenses available

restaurant & retail store fronts for lease

connected to **231,000 SF**
of Class A office space

887 parking spaces
in the adjacent parking garage

easily accessible to major
thoroughfares, public transportation
and the college shuttles

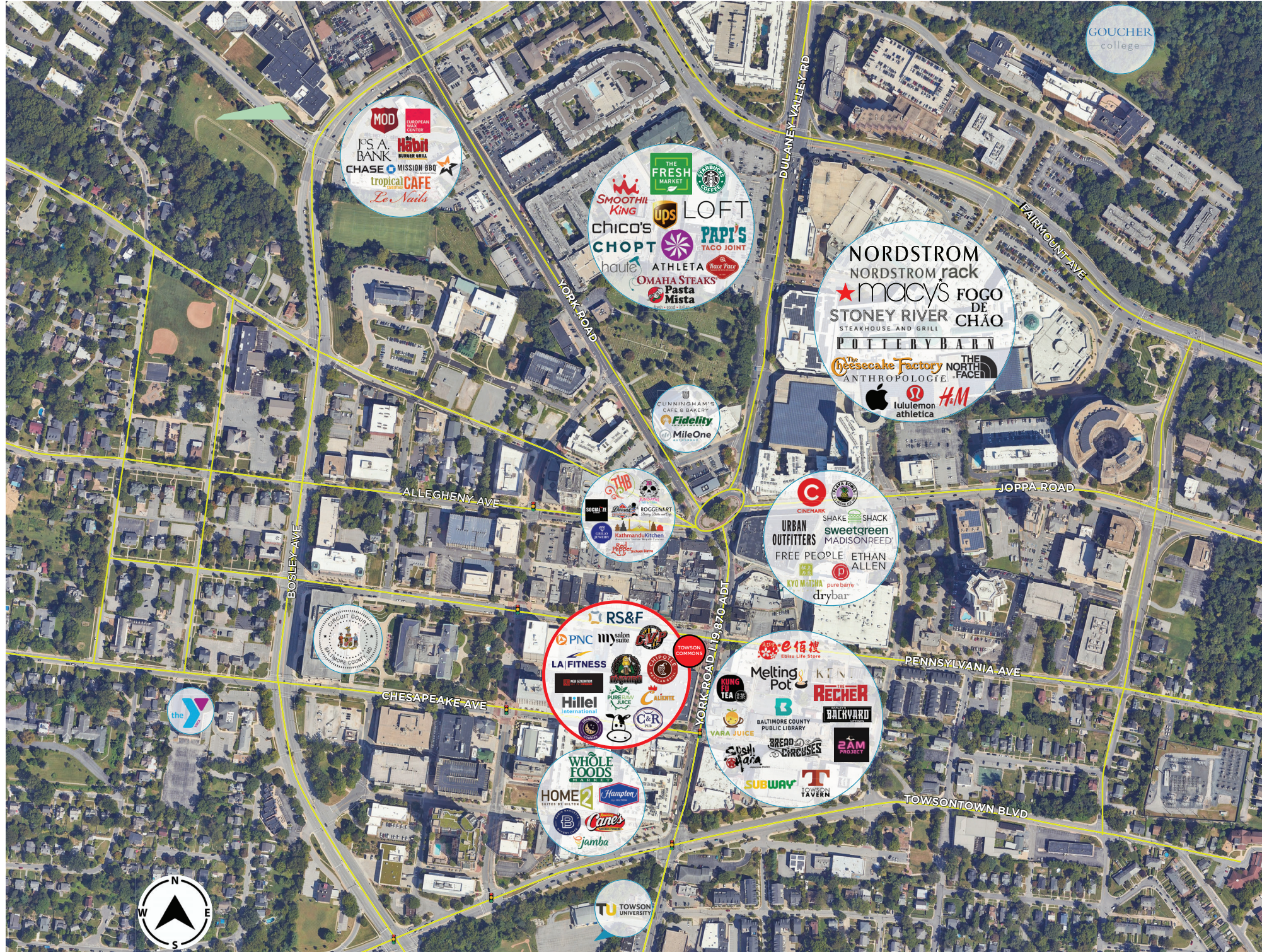
adjacent to announced
54,000 SF Whole Foods
Towson Row project





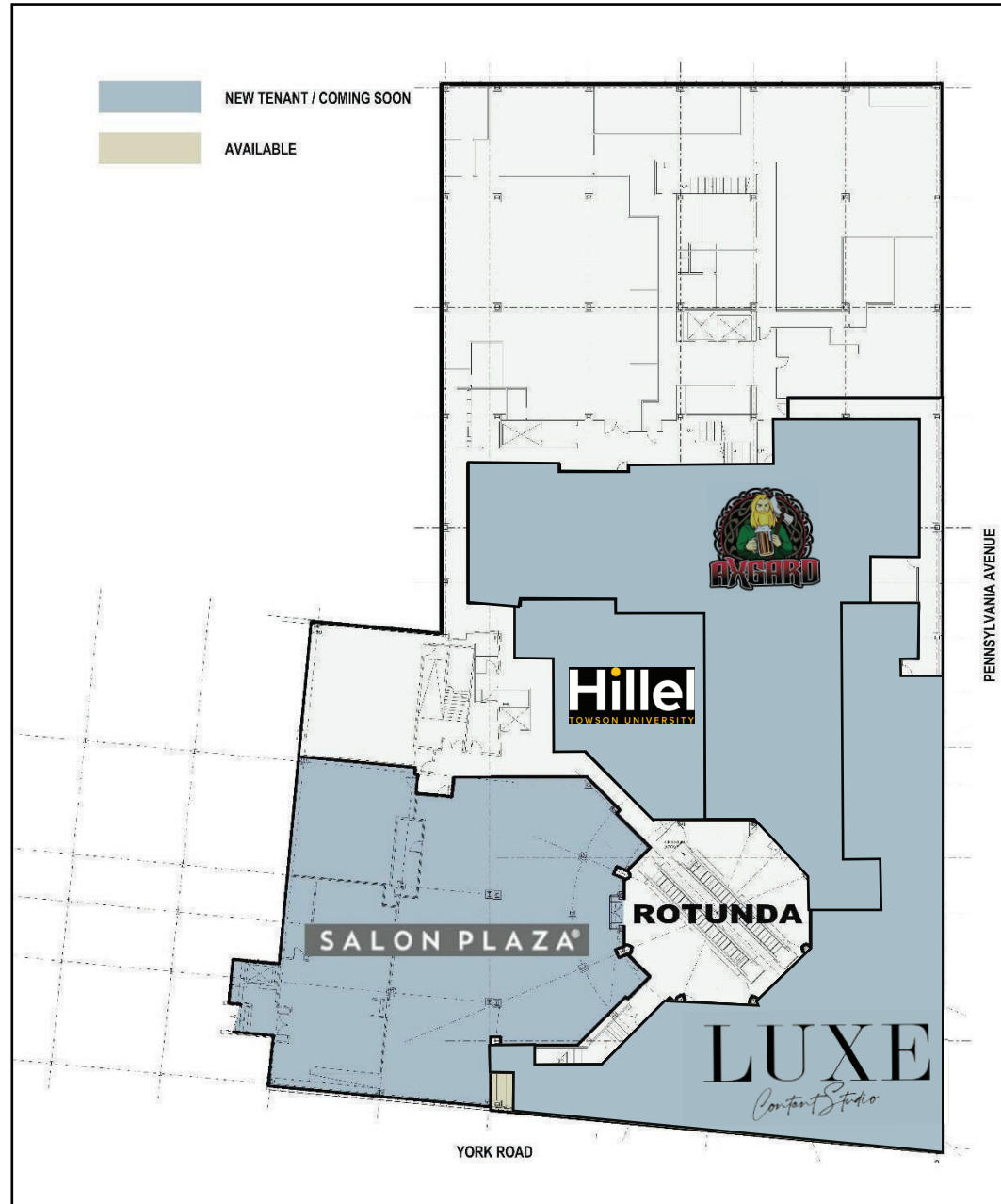
NAMED "ONE OF THE TOP 10 HOTTEST MARKETS" BY NATION'S RESTAURANT NEWS

Towson, Maryland is located just 8 miles north of downtown Baltimore and is the county seat of Baltimore County. Towson is surrounded by two colleges: Towson University and Goucher College. The area is a great mix of college students, young professionals and families.



Street Level

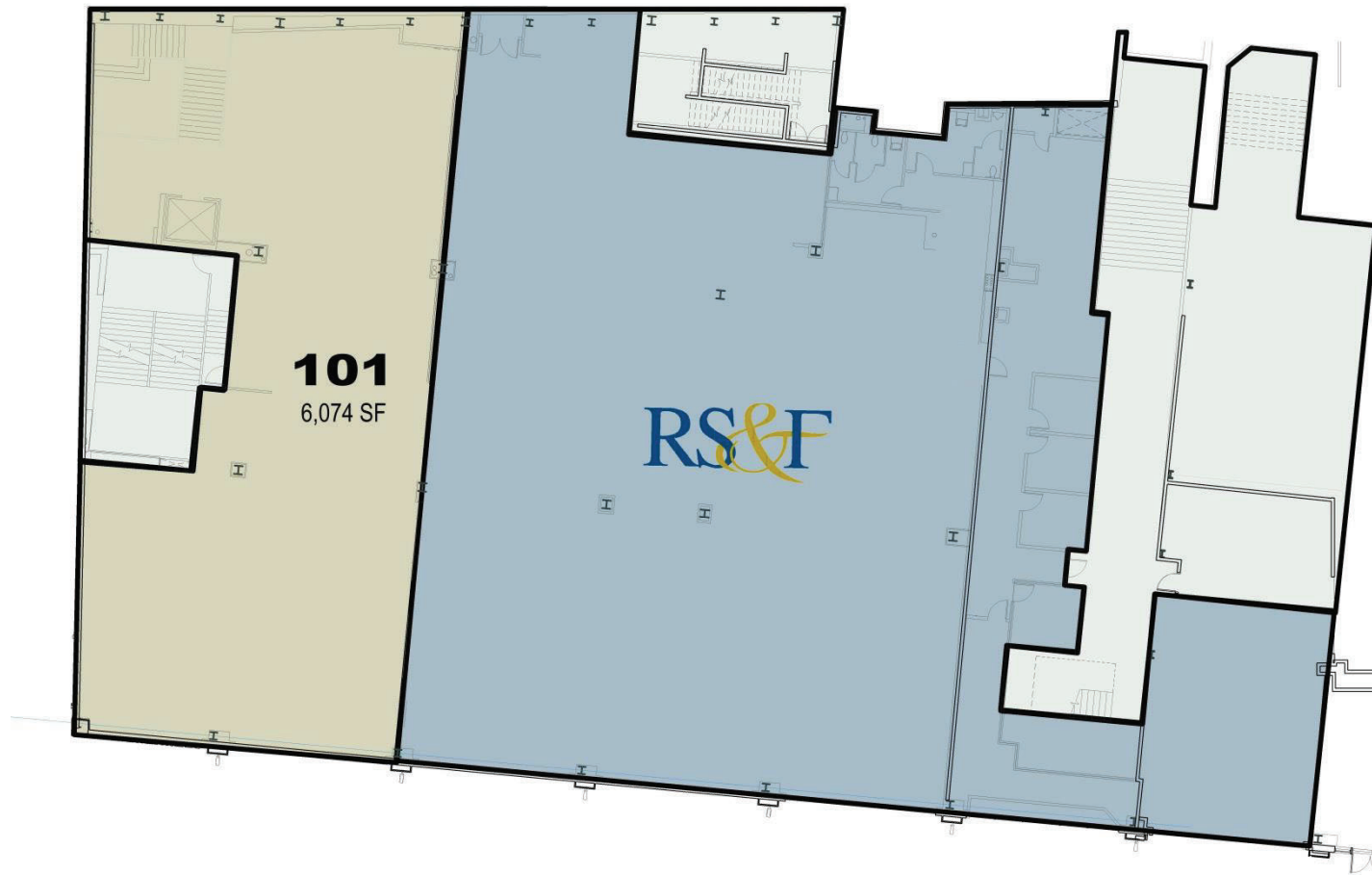




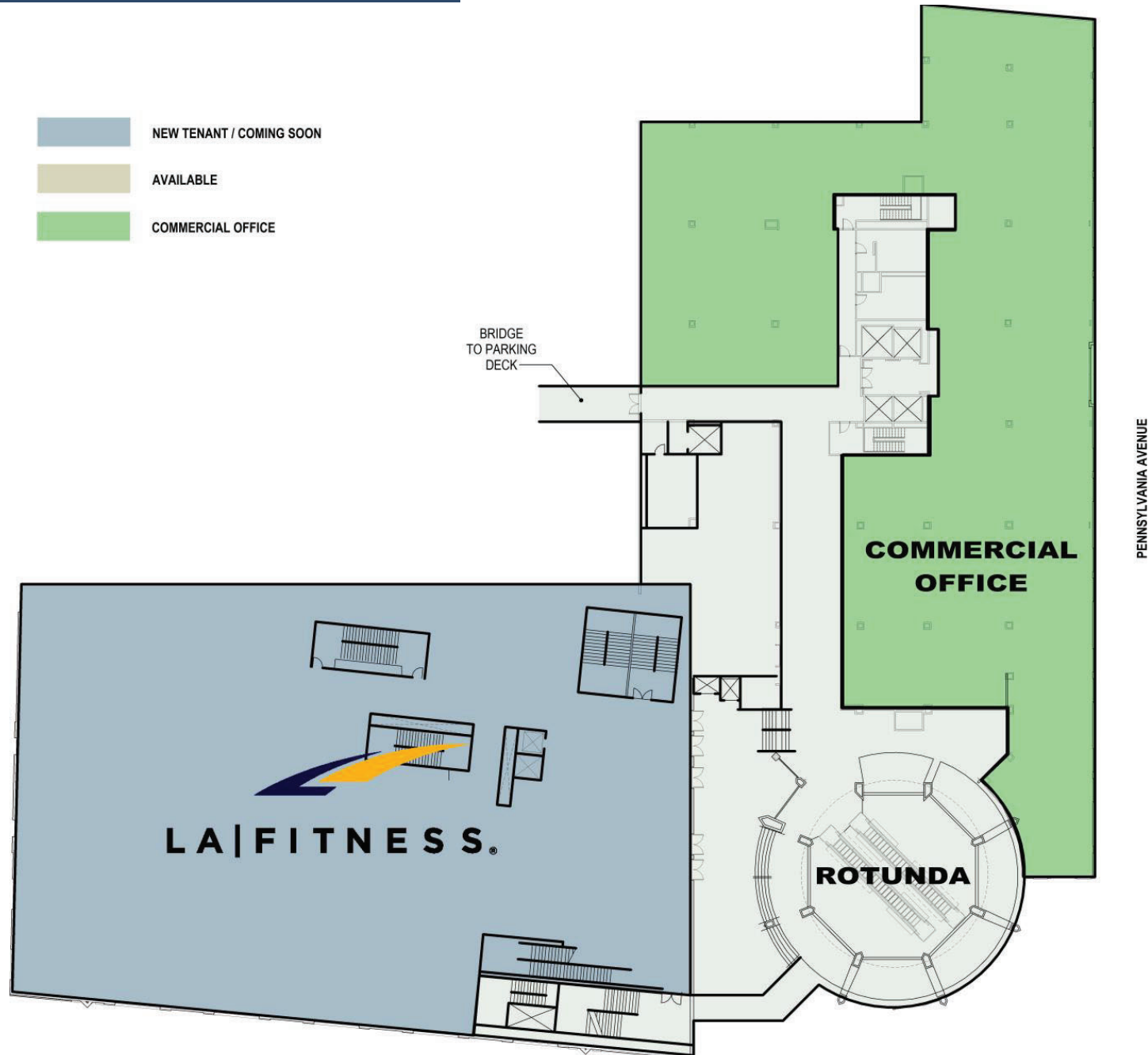
Mezzanine

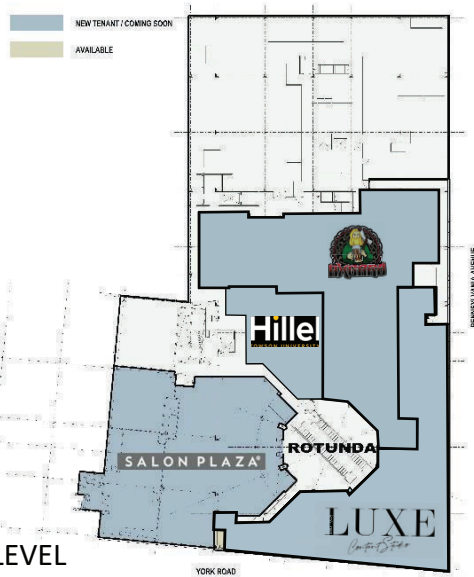
 NEW TENANT / COMING SOON

 AVAILABLE



LA Fitness/Bridge to Parking

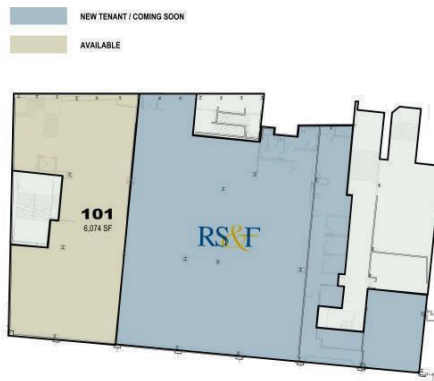




L0 LOWER LEVEL

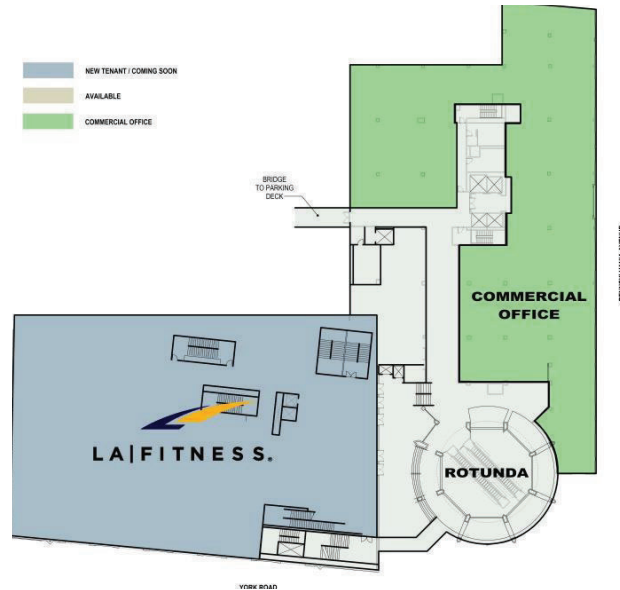


L1 STREET LEVEL



L2 MEZZANINE LEVEL

×



L3 UPPER LEVEL

1 MILE

Population: **23,316**
 Avg Household Income: **\$103,643**
 Daytime Population: **24,468**
 Bachelors Degree & >: **6,959**
 Median Age: **30**
 Households: **8,159**
 \$ Spent on Apparel & Services (2025): **\$17,236,767**

3 MILES

Population: **120,391**
 Avg Household Income: **\$142,307**
 Daytime Population: **69,767**
 Bachelors Degree & >: **43,901**
 Median Age: **39.2**
 Households: **48,247**
 \$ Spent on Apparel & Services (2025): **\$132,988,586**

5 MILES

Population: **313,267**
 Avg Household Income: **\$135,521**
 Daytime Population: **147,022**
 Bachelors Degree & >: **109,144**
 Median Age: **40.2**
 Households: **128,752**
 \$ Spent on Apparel & Services (2025): **\$338,462,196**

